



# cohidrex

**Spare Parts and Attachments  
for Earthmoving, Construction  
and Mining Machinery**

**ENGLISH**



# cohidrex

## A company with values

Cohidrex supplies **all types of spare parts, accessories and attachments** for Earthmoving, Construction and Mining machinery. A selection of leading brands whose products offer superior performance and optimum results.

Our mission is to **meet the customer's needs** promptly, efficiently, and effectively. This commitment is possible thanks to our dedication to quality, exceptional service, and a carefully crafted logistics system.

Cohidrex relies on **large warehouses that are strategically distributed** in order to optimise marketing, as well as to accommodate a large stock that ensures immediate availability.

The aim of the company is to look after the customer by always presenting them solutions that **maximize business profitability**.

## COMMITTED TO YOU



**Cohidrex** offers the **ECS service**, a very versatile and intuitive web platform that facilitates streamlined order management.

Access detailed information on the products you need, consult equivalent references, track your shipments, and much more.

Unmatched service at your fingertips.



# .Trasteel WEAR PARTS

The aim in building our own brands has been to **offer an excellent final product**. To this end, a great deal of attention has been paid to all aspects, starting from the design to the selection of raw materials and production processes. This is what defines **Trasteel Wear Parts**.

A **global brand** that combines technology, efficiency and design to deliver maximum profitability on the field. This is the main goal of **Trasteel Wear Parts**.

With an established presence in more than 50 countries and on 5 continents, we are proud that **Trasteel Wear Parts** is now a globally recognised brand that provides our customers with high quality solutions.



## Wear Parts

Wearing protection elements for excavators, loaders, bulldozers, etc.

## Undercarriage

Undercarriage components for all kind of tracked equipment, made of steel or rubber.

## Attachments

Equipment that render any machine efficient, from quick couplers and buckets to demolition equipment and hydraulic hammers.

## Wear Parts



## Undercarriage



## Attachments





Innovation, design, technology and performance are the 4 main features of Trasteel Elite.



## EXCAVATOR TEETH



**PENETRATION ELITE P**  
High penetration tooth for general purposes.



**HEAVY DUTY ELITE PHD**  
HD tooth with extra wear material and excellent penetration and self-sharpening.



**TIGER ELITE V**  
Extra penetration tooth for very compact grounds.



**TWIN ELITE TU**  
Double penetration tooth for very compact grounds.



## LOADER TEETH



**LOADER ELITE L**  
General purpose tooth for loose material.



**LOADER ELITE LHD**  
Reinforced tooth for loading highly abrasive materials and rocks.



## BACKHOE TEETH



**TOP PIN ELITE**  
Tooth for general purposes.



**BOLT-ON ELITE**  
Bolt-on tooth for general purposes.



## EXCAVATOR AND LOADER ADAPTERS

**WEAR CAP AND SOLID ADAPTERS**  
We design reinforced and solid adapters to avoid breakage in very severe working conditions.



## RIPPER TEETH

**RIPPER TEETH**  
Super reinforced and self-sharpening ripper teeth.



## ELITE Optimised Designs

Suitable for most of the systems on the market



CATERPILLAR -J



CATERPILLAR -K



VOLVO



DOOSAN



KOMATSU



SUPER V



UNI-Z



KINGMET



CAT & KOM RIPPERS



HYUNDAI



H&L



JCB



## SIDE BARS, LIP PROTECTORS, AND HEEL SHROUDS

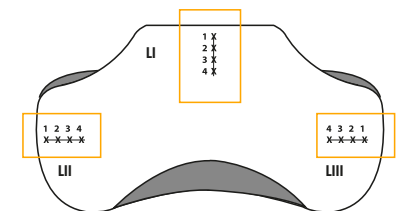
## BUCKET PROTECTION

Anti-wear protection to reinforce the most sensitive areas of the bucket. Get an all-round protection with Trasteel.



## TRASTEEL STEELS SPECIFICATIONS

Trasteel offers different specifications in its cast steels to meet the needs of our customers, achieving the appropriate ductility and wear resistance for each application.



Hardness point N°	1 (HB)	2 (HB)	3 (HB)	4 (HB)
Line I. Hardness Value	577 (543)	566 (531)	567 (532)	569 (534)
Line II. Hardness Value	577 (543)	569 (534)	571 (536)	569 (534)
Line III. Hardness Value	571 (536)	576 (542)	569 (534)	566 (531)

The names, descriptions, illustrations and references of other brands are used for reference purposes.

# Trasteel BLADES

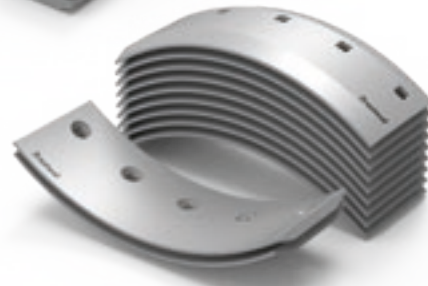
**Trasteel Blades** is the product of our vast experience in designing, developing and marketing of all types of spare parts and ground engaging tools for machinery.

As specialists with over 30 years of constant innovation, we are proud that **Trasteel Blades** is today a brand recognized throughout the world for its commitment to quality and for offering its customers exceptional performance on the field.

**Cutting edges, blades, wear plates and end bits for motor graders, bulldozers, loaders, scrapers, etc.**

**Available for the main brands: CATERPILLAR, KOMATSU, VOLVO, JOHN DEERE, CASE, ETC.**

The majority of the results obtained in the hardness and resilience tests of our steels, carried out in external laboratories and certified by the ENAC (Spanish National Accreditation Body), reflect values that are higher than those indicated in the specifications of our ground engaging tools.



### Blades and end bits for bulldozers and scrapers



### Blades for excavators and loaders



### Motor grader blades



# Trasteel TOOLS

**Trasteel Tools** offers two lines of demolition and milling tools.

## Tools for Hydraulic Hammers

Manufactured with the best raw materials, they are subjected to rigorous and demanding quality controls, common to all **Trasteel Wear Parts** spare parts, thus offering excellent results.



Model	Type	Applications
P	Conical	Breaking of low-abrasive or loose soils and homogeneous material
S	Chisel	Asphalt and concrete breaking
D	Blunt	Breaking of large stone boulders
E	Pyramidal	Demolition of concrete and compacted materials

## Milling bits

The **Trasteel Tools'** bits follow and meet all our own rigorous quality requirements.

We offer a full range for rock, concrete and asphalt milling works with exceptional performance in all of them.

Our range of milling bits covers shaft diameters from 10 mm. up to 30-38 mm., each of them applying different lengths and diameters for the tungsten carbide tip.



# Trabber

Trabber offers a comprehensive range of rubber tracks for mini and midi excavators, as well as other equipment with track systems, adaptable to most brands on the market.

Trabber tracks are manufactured using the best raw materials, using the most advanced production processes, which makes them a final product of excellent quality.

This further extends the service life of the product, consequently reducing its maintenance costs.

Maximum profitability on the field



## Rubber Pads

Trabber also offers rubber pads for mounting on steel tracks in three distinct versions:

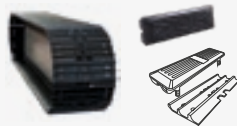
**BOLT-ON | CHAIN-ON | CLIP-ON**



### RUBBER TRACK STRUCTURE

- Increased flexibility** — Prevents premature breakage
- Reinforced sides** — Prevents cuts in the sidewalls
- Better rubber quality** — Increased durability
- Internal steel cord** — Higher tensile strength
- Forged sprocket teeth** — Robust, strong tracks

### STEEL TRACK + BOLT-ON PAD



It is placed directly on the steel shoe, providing great versatility.

### STEEL TRACK + CHAIN-ON PAD



It is placed directly on the track link, offering greater robustness and resistance.

### STEEL TRACK + CLIP-ON PAD



Allows any machine to be easily transformed with rubber.

# Trasteel TRACK

Trasteel Track has an extensive stock of undercarriage components for all types of tracked equipment.

- Mini and Midi Excavators
- Excavators
- Bulldozers
- Asphalt Pavers
- Drilling Machines

All our spare parts are tested and guaranteed for optimum performance and superior profitability.



## EXCAVATOR AND BULLDOZER UNDERCARRIAGE



- Lubricated and greased tracks
- Standard and Heavy Duty shoes
- Top and Track rollers
- Sprocket segments and full sprockets
- Front idler with or without brackets
- Nuts and bolts



In keeping with **Trasteel Wear Parts'** commitment to being a global supplier for the best components and equipment, we offer a highly professional assortment of attachments for all types of construction, earthmoving and mining machinery.



**ECO-TECH Series**

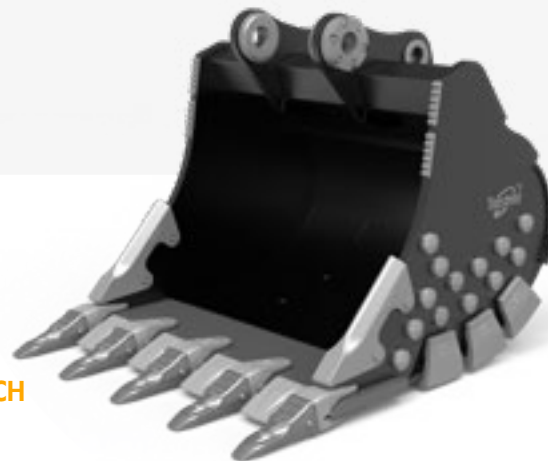
In a competitive world, getting the most out of every working hour is crucial. **Trasteel Wear Parts** and its **Trasteel Tech** range of attachments will help you achieve this.

## Equipment for Excavators

1. Digging and trenching buckets
2. Skeleton buckets for material sorting
3. Cleaning buckets with and without TILT movement
4. Trapezoidal buckets for ditches
5. Rippers
6. Mechanical and hydraulic quick couplers
7. TILT and ROTOTILT equipment for articulation

## Front Loader Equipment

1. Buckets for light material loading
2. Heavy Duty buckets for quarry faces
3. High dump buckets
4. Log loading grapples
5. Stone block loading grapples
6. Quick couplers



**EXTREME-TECH Series**

The attachments of the **Trasteel EXTREME-TECH** series are designed on the basis of a detailed preliminary study and according to the customer's needs, especially for the most demanding applications.

- 1 Maintenance cost saving
- 2 Up to 40% more power
- 3 Protects the excavator
- 4 Easy to repair
- 5 Ease of use and comfort



**Trasteel Tech** offers a wide range of hydraulic hammers for light excavators and mini excavators with particular features that make them unique in the market.

- **Monoblock without tie-rods** for increased torsional strength
- **Gas on the head system** to deliver more power
- **Single effect system** prevents overheating and protects the excavator
- **External distributor** simplifies maintenance
- **Compact and ergonomic housing** for improved operator comfort

These features offer the customer a **crushing profitability**.

# cohidrex

[www.cohidrex.com](http://www.cohidrex.com)



☎ +34 650 960 957

✉ [export@cohidrex.es](mailto:export@cohidrex.es)

## MADRID

Pol. Ind. La Raya • C/ Guadalquivir, 2  
E28816 Camarma de Esteruelas  
Madrid (Spain)

☎ +34 91 802 12 91

## CÁCERES

Pol. Industrial Las Capellanías  
C/ Alpargateros, 1  
E10005 Cáceres (Spain)

☎ +34 927 230 834

## LA CORUÑA

LT51 Workspace • Oficina 1A  
La Telva 2 C, Pt. 1  
E15660 Cambre • La Coruña (Spain)

☎ +34 666 572 640